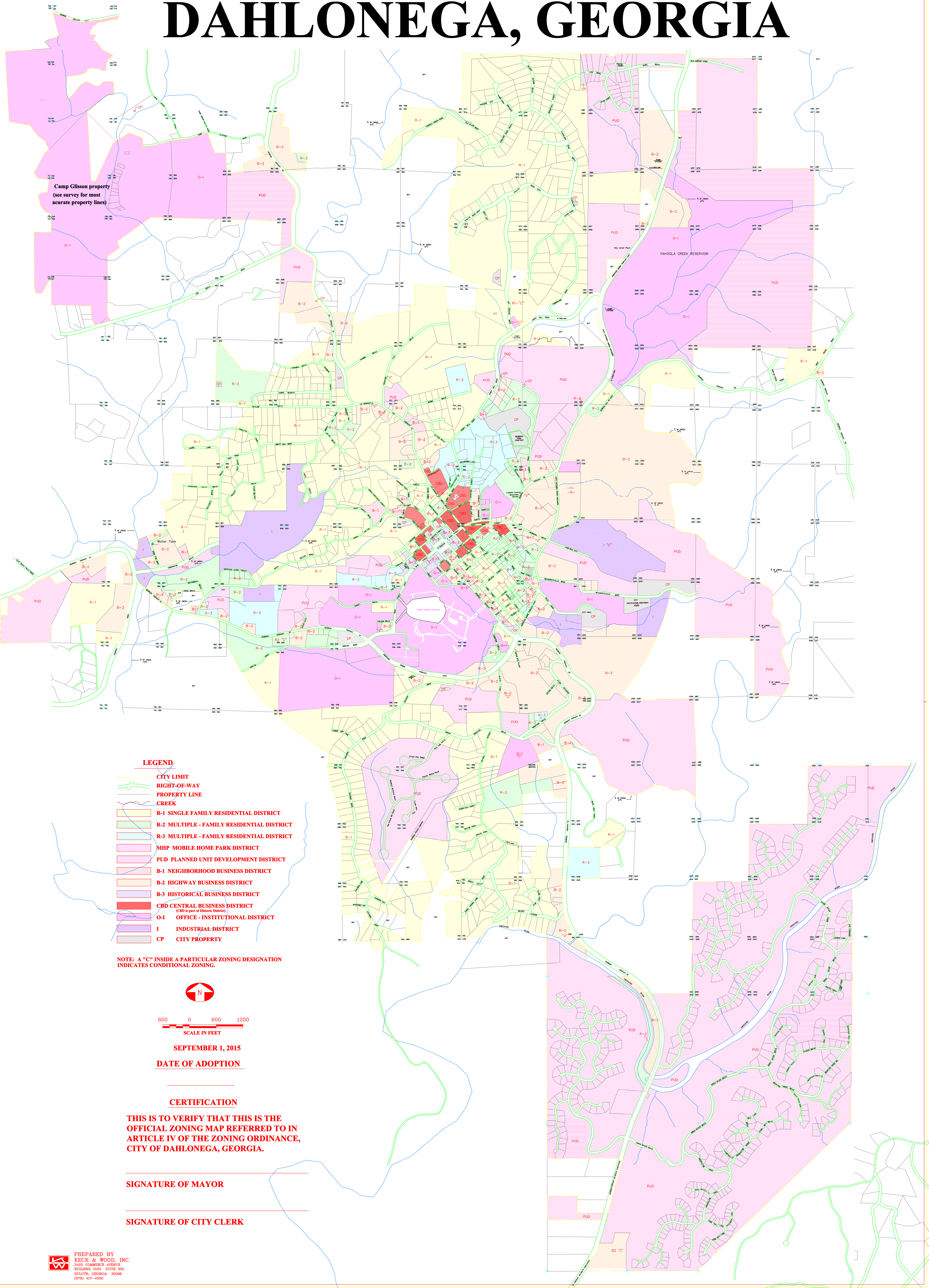


ZONING MAP

CITY OF

DAHLONEGA, GEORGIA

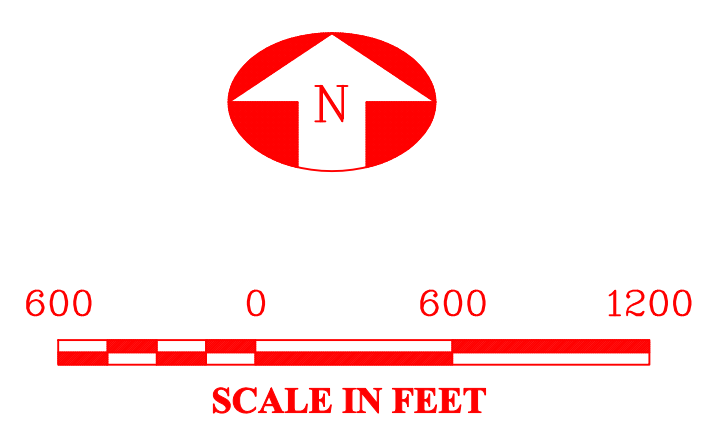


Camp Glisson property
(see survey for most accurate property lines)

LEGEND

- CITY LIMIT
- RIGHT-OF-WAY
- PROPERTY LINE
- CREEK
- R-1 SINGLE FAMILY RESIDENTIAL DISTRICT
- R-2 MULTIPLE - FAMILY RESIDENTIAL DISTRICT
- R-3 MULTIPLE - FAMILY RESIDENTIAL DISTRICT
- MHP MOBILE HOME PARK DISTRICT
- PUD PLANNED UNIT DEVELOPMENT DISTRICT
- B-1 NEIGHBORHOOD BUSINESS DISTRICT
- B-2 HIGHWAY BUSINESS DISTRICT
- B-3 HISTORICAL BUSINESS DISTRICT
- CBD CENTRAL BUSINESS DISTRICT
(CBD is part of Historic District)
- O-1 OFFICE - INSTITUTIONAL DISTRICT
- I INDUSTRIAL DISTRICT
- CP CITY PROPERTY

NOTE: A "C" INSIDE A PARTICULAR ZONING DESIGNATION INDICATES CONDITIONAL ZONING.



SEPTEMBER 1, 2015
DATE OF ADOPTION

CERTIFICATION

THIS IS TO VERIFY THAT THIS IS THE OFFICIAL ZONING MAP REFERRED TO IN ARTICLE IV OF THE ZONING ORDINANCE, CITY OF DAHLONEGA, GEORGIA.

SIGNATURE OF MAYOR

SIGNATURE OF CITY CLERK